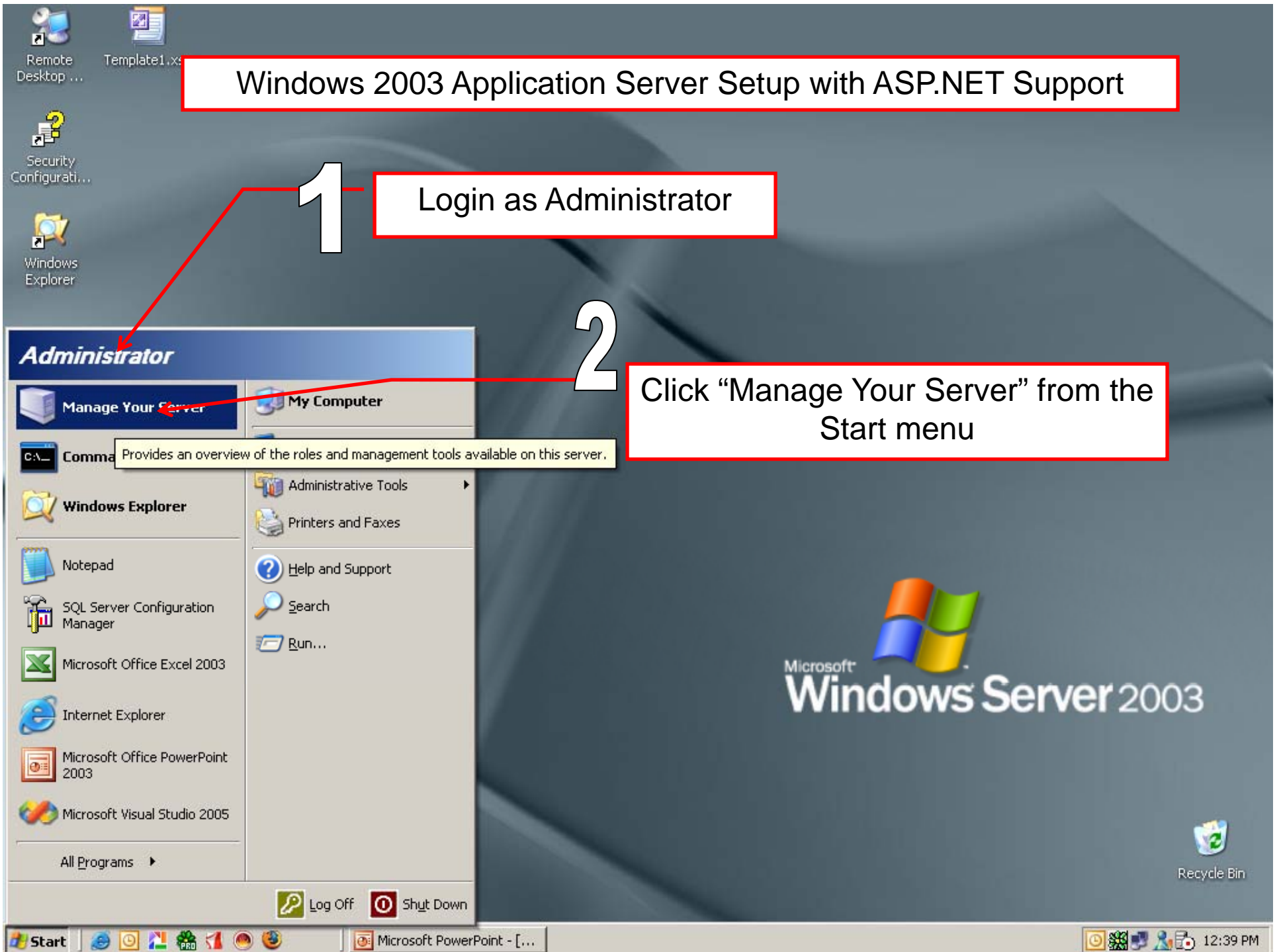


Windows 2003 Application Server Setup with ASP.NET Support

1 Login as Administrator

2 Click "Manage Your Server" from the Start menu



- Remote Desktop ...
- Security Configurati...
- Windows Explorer

Manage Your Server
Server: TAZ

Search Help and Support Center

Adding Roles to Your Server

Adding roles to your server lets it perform specific tasks. For example, the file server role enables your server to share files. To add a role, start the Configure Your Server Wizard by clicking Add or remove a role.

[Add or remove a role](#)

[Read about server roles](#)

Managing Your Server Roles

After you have added a role, return to this page at any time for tools and information to help you with your daily administrative tasks.

No roles have been added to this server. To add a role, click Add or remove a role.

Don't display this page at logon

Tools and Updates

- Administrative Tools
- More Tools
- Windows Update
- Computer and Domain Name Information
- Internet Explorer Enhanced Security Configuration

See Also

- Help and Support
- Microsoft TechNet
- Deployment and Resource Kits
- List of Common Administrative Tasks
- Windows Server Communities
- What's New
- Strategic Technology Protection Program

Click "Add or Remove a Role" link.

2003



Configure Your Server Wizard

Preliminary Steps

You can ensure that you successfully configure your server by completing the following steps before continuing.

Before continuing, verify that the following steps have been completed.

- Install all modems and network cards.
- Attach all necessary cables.
- If you plan to use this server for Internet connectivity, connect to the Internet now.
- Turn on all peripherals, such as printers and external drives.
- Have your Windows Server 2003 Setup CD available, or know your network installation path.

When you click Next, the wizard will search for network connections.

< Back

Next >

Cancel

Help

Click "Next" to continue

Don't display this page at logon

Tools and Updates

Administrative Tools
More Tools
Windows Update
Computer and Domain Name Information
Internet Explorer Enhanced Security Configuration

See Also

Help and Support
Microsoft TechNet
Deployment and Resource Kits
List of Common Administrative Tasks
Windows Server Communities
What's New
Strategic Technology Protection Program

Configure Your Server Wizard

Preliminary Steps

You can ensure that you successfully configure your server by completing the following steps before continuing.

Before continuing, verify that the following steps have been completed.

- Install all modems and network cards.
- Attach all necessary cables.
- If you plan to use this server for Internet connectivity, connect to the Internet.
- Turn on all peripherals, such as printers and external drives.
- Have your Windows Server 2003 Setup CD available, or know your network installation path.

When you click Next, the wizard will search for network settings.

Wait for the wizard to collect server information

Configure Your Server Wizard

Please wait while the wizard detects your network settings. This may take a minute or more for each network connection on this server.

Getting Operating System version information...



Don't display this page at logon

Configure Your Server Wizard

Server Role

You can set up this server to perform **one or more** roles to this server, you can run this wizard again.

Select a role. If the role has not been added, you remove it. If the role you want to add or remove

Server Role	Configured
File server	No
Print server	No
Application server (IIS, ASP.NET)	No
Mail server (POP3, SMTP)	No
Terminal server	No
Remote access / VPN server	No
Domain Controller (Active Directory)	No
DNS server	No
DHCP server	No
Streaming media server	No
WINS server	No

Select the "Application Server (IIS, ASP.NET)" option from the list

Application server (IIS, ASP.NET)

Application servers provide the core technologies required to build, deploy, and operate XML Web Services, Web applications, and distributed applications. Application server technologies include ASP.NET, COM+ and Internet Information Services (IIS).

[Read about application servers](#)

View the [Configure Your Server log](#).

< Back

Next >

Cancel

Help

Click "Next" to continue

Don't display this page at logon

Tools and Updates

Administrative Tools
More Tools
Windows Update
Computer and Domain Name Information
Internet Explorer Enhanced Security Configuration

See Also

Help and Support
Microsoft TechNet
Deployment and Resource Kits
List of Common Administrative Tasks
Windows Server Communities
Program

Start

Manage Your Server

Microsoft PowerPoint - [...]

Configure Your Serve...

12:32 PM

Recycle Bin

Configure Your Server Wizard

Application Server Options

IIS, COM+, ASP.NET, and Microsoft .NET Framework are installed automatically for this role.

Select the additional tools that you want to install on this server.

FrontPage Server Extensions

FrontPage Server Extensions are a set of Web server extensions that you can use to publish content with FrontPage, Visual Studio, and Web Folders. This selection also turns on the Indexing Service.

Enable ASP.NET

ASP.NET is a powerful programming framework for building Web-based applications and services that can target any browser or device.

Check the "Enable ASP.NET" option

< Back

Next >

Cancel

Help

Don't display this page at logon

Help and Support Center

Tools and Updates

- Administrative Tools
- More Tools
- Windows Update
- Computer and Domain Name Information
- Internet Explorer Enhanced Security Configuration

See Also

- Help and Support
- Microsoft TechNet
- Deployment and Resource Kits
- List of Common Administrative Tasks
- Windows Server Communities
- What's New
- Strategic Technology Protection Program

Click "Next" to continue

Configure Your Server Wizard

Summary of Selections
View and confirm the options you have selected.

Summary:

- Install Internet Information Services (IIS)
- Enable COM+ for remote transactions
- Enable Microsoft Distributed Transaction Coordinator (DTC) for remote access
- Enable ASP.NET

To change your selections, click Back. To continue setting up this role, click Next.

< Back **Next >** Cancel Help

Help and Support Center

Tools and Updates

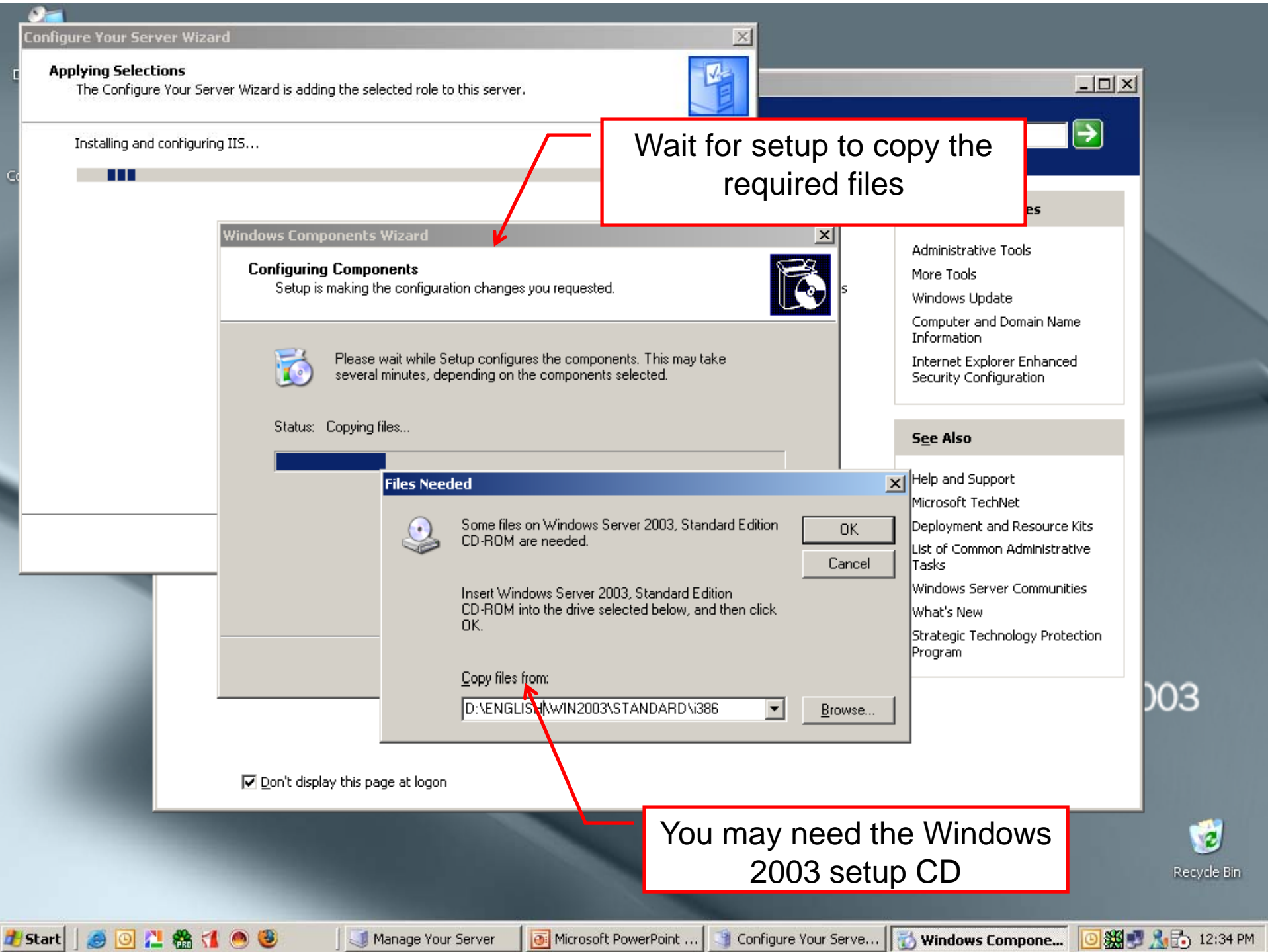
- Administrative Tools
- More Tools
- Windows Update
- Computer and Domain Name Information
- Internet Explorer Enhanced Security Configuration

See Also

- Help and Support
- Microsoft TechNet
- Deployment and Resource Kits
- List of Common Administrative Tasks
- Windows Server Communities
- What's New
- Strategic Technology Protection Program

Click "Next" to continue

Don't display this page at logon



Wait for setup to copy the required files

You may need the Windows 2003 setup CD

Configure Your Server Wizard

This Server is Now an Application server

You have successfully set up this server as an application server by installing IIS.

To add or remove another role, run the Configure Your Server Wizard again.

[View the next steps for this role](#)


For a record of your changes, see the [Configure Your Server log](#).
To close this wizard, click Finish.

< Back

Finish

Cancel

Help

 Review the next steps for this role

Click "Finish" to finalize Application Server setup.

Don't display this page at logon

- Remote Desktop ...
- Security Configurati...
- Windows Explorer

Manage Your Server

Server: TAZ

Search Help and Support Center

Managing Your Server Roles

Use the tools and information found here to add or remove roles and perform your daily administrative tasks.

Your server has been configured with the following roles:

- Application Server**
 - Application servers provide the core technologies required to build, deploy and operate XML Web Services, Web applications, and distributed applications. Application server technologies include ASP.NET, COM+, and Internet Information Services (IIS).

Don't display this page at logon

- Add or remove a role
- Read about server roles
- Read about remote administration

- ### Tools and Updates
- Administrative Tools
 - More Tools
 - Windows Update
 - Computer and Domain Name Information
 - Internet Explorer Enhanced Security Configuration

- Manage this application server
- Read about application servers
- Read about Web Interface for Remote Administration of Web servers
- Review the next steps for this role

- ### See Also
- Help and Support
 - Microsoft TechNet
 - Deployment and Resource Kits
 - List of Common Administrative Tasks
 - Windows Server Communities
 - What's New

Your server is now an Application Server. Make sure that the description clearly indicates that your server supports ASP.NET.