



infoRouter Live Update

A program that automatically updates your instance of infoRouter with the latest patches

infoRouter Live Update

infoRouter Live Update is a tool that downloads a catalog of the latest versions of infoRouter components. The same catalog is created for your instance of infoRouter.

The two catalogs are then compared to come up with the differences.

The latest versions of the infoRouter components are then downloaded and installed on your server.

You may run Live Update as many times as you would like. Even in cases where a Live Update may fail due to network or connectivity errors, when run again, Live Update will pick up from where it left off.

To run Live Update, simply launch the IRLiveUpdateXX.exe (where XX is the current major release level).

This program is located in the root of the infoRouter application directory.
(C:/infoRouter/IRLiveUpdate80.exe)

Check the status of your infoRouter instance

As a general rule, you should check the status of your infoRouter server from time to time. To do so, navigate to the infoRouter Control Panel and click on Server Status

The screenshot displays the 'infoRouter Demo Portal' interface. At the top, there is a search bar and a navigation menu with the following items: Home, Document Library, Categories, Search, System Administrator, My Tasks, **Control Panel** (highlighted with a red circle), Help, and Logout. Below the navigation menu is the 'Control Panel' section, which contains a grid of 12 tiles. The 'Server Status' tile, located in the bottom-left corner of the grid, is highlighted with a red rounded rectangle. A red arrow points from the 'Control Panel' menu item to this 'Server Status' tile. The 'Server Status' tile includes an icon of a globe with a plug and the text: 'Server Status Displays the infoRouter server version and platform information'. Other tiles include 'Disk Space Usage', 'License Key', 'System Recycle Bin', 'General Application Settings', 'Authentication and Password Policy Settings', 'E-mail and Notification Settings', 'Flush Application Cache and Settings', 'Search and Category Administrators', 'Online Samples', 'Logs & Reports', and 'Document Types'. The bottom of the browser window shows the status bar with 'Internet | Protected Mode: On' and a zoom level of 100%.

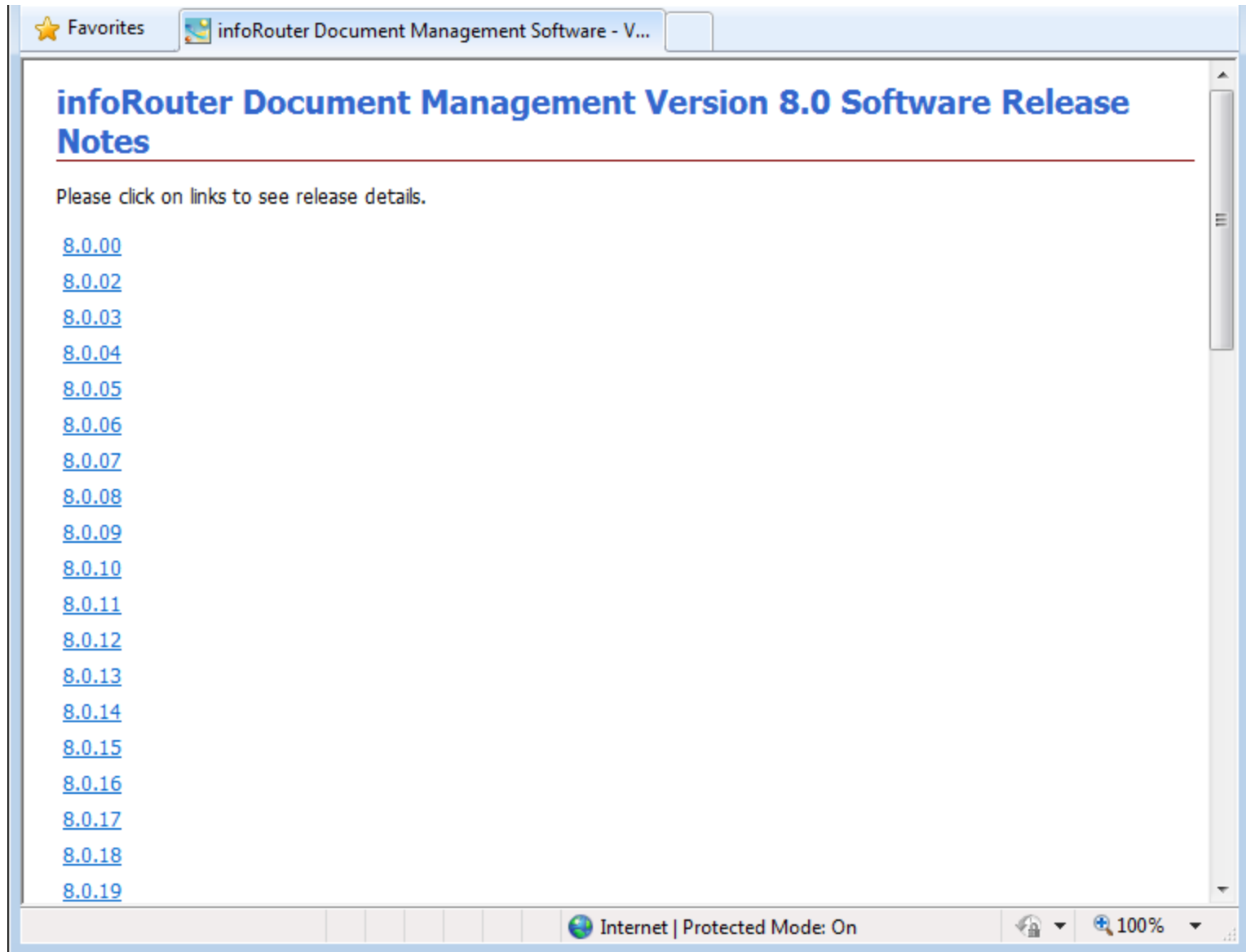
Server Status

The example below shows that the current version is 8.1.133. The release version is at 8.1.139. You may click on the “Release Notes” link to display the release notes for the latest version.

The screenshot displays the 'infoRouter Demo Portal' interface. At the top, there is a search bar and a navigation menu with links for Home, Document Library, Categories, Search, System Administrator, My Tasks, Control Panel, Help, and Logout. The 'Control Panel' link is circled in red. Below the navigation, the 'Server Status' section is highlighted with a red circle. Under this section, there are two main areas: 'infoRouter Release Version' and 'infoRouter Local Server Version'. The 'infoRouter Release Version' section shows 'infoRouter Release Version : 8.1.139' and a blue link for 'Release Notes', both circled in red. A red arrow points from the 'Release Notes' link to the 'infoRouter Local Server Version' section. The 'infoRouter Local Server Version' section shows 'infoRouter Local Server Version : 8.1.133' with a red warning message '[Please Run Live Update]' next to it, also circled in red. Below this, several system details are listed: Database Type : SQLSERVER, Operating System : Win32NT, Operating System Version : 5.2.3790.131072, .Net framework version : 2.0.50727.3603 (x86), Server Default Culture : English (United States), IIS Server Software : Microsoft-IIS/6.0, and IIS Server Protocol : HTTP/1.1.

Please note that we may have release several updates so be sure to read all relevant release notes.

Release Notes page on our website.



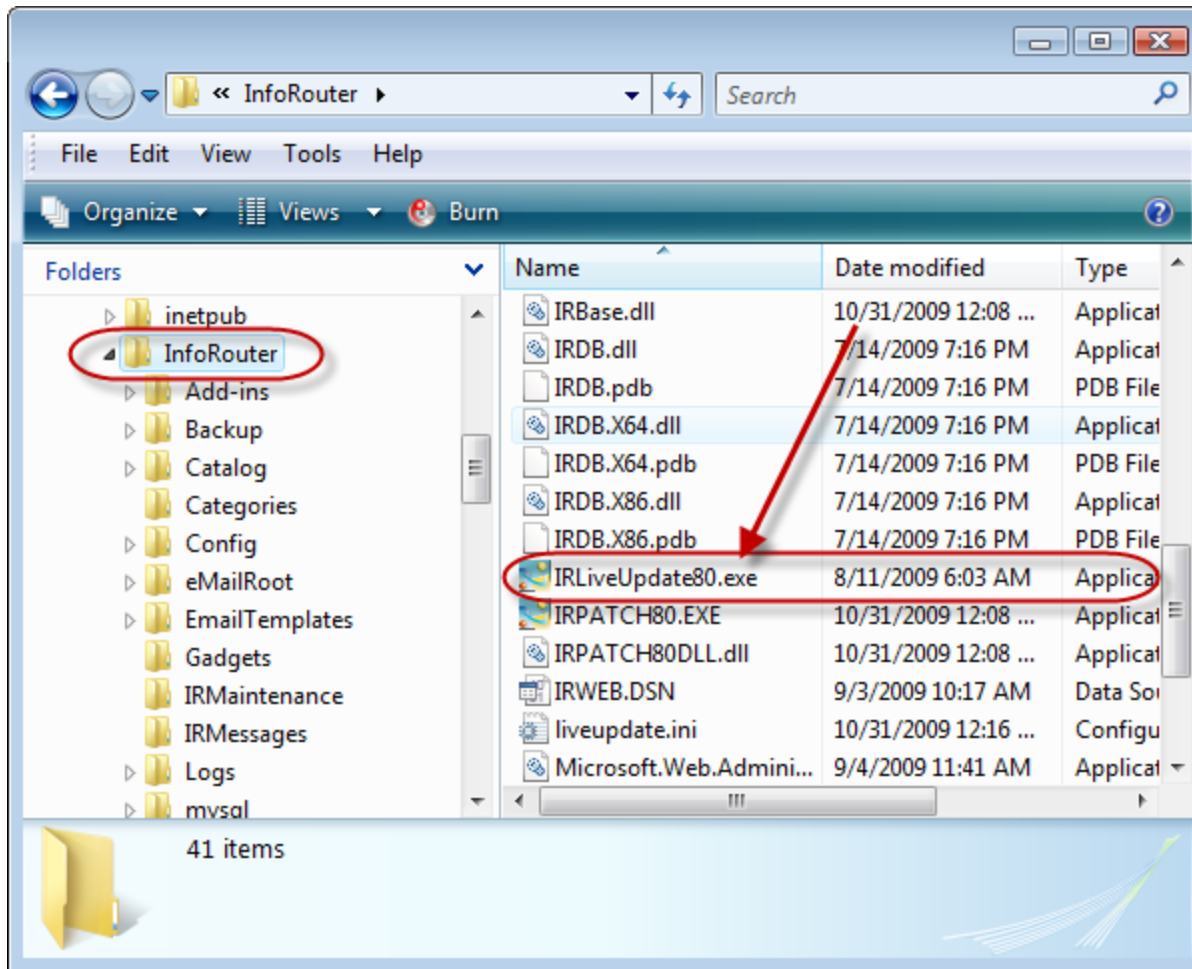
★ Favorites infoRouter Document Management Software - V...

infoRouter Document Management Version 8.0 Software Release Notes

Please click on links to see release details.

- [8.0.00](#)
- [8.0.02](#)
- [8.0.03](#)
- [8.0.04](#)
- [8.0.05](#)
- [8.0.06](#)
- [8.0.07](#)
- [8.0.08](#)
- [8.0.09](#)
- [8.0.10](#)
- [8.0.11](#)
- [8.0.12](#)
- [8.0.13](#)
- [8.0.14](#)
- [8.0.15](#)
- [8.0.16](#)
- [8.0.17](#)
- [8.0.18](#)
- [8.0.19](#)

Internet | Protected Mode: On 100%



Please make sure to run a backup of your database, warehouse and application directory before you run Live Update. It is always a good idea to stop IIS to prevent access from users while Live Update is running.

The average Live Update only takes a couple of minutes run.



InfoRouter Live Update

Did you know about the infoRouter Forum site?
24/7 Access to information about infoRouter

<http://forum.inforouter.com>