

infoRouter Microsoft Office Add-in Installation Guide



infoRouter Add-in for Microsoft Office Installation Guide
Version 8.0

Active Innovations, Inc. A Document Management Company
Copyright 1998-2011

<http://www.inforouter.com>

infoRouter MS Office Add-in Installation Guide

To be able install this add-in, you must have rights to install applications on to your workstation. This is usually controlled by your network administrator.

If users are not allowed to install applications on their workstations please ask your network administrator to install this application for you or setup a Group Policy installation.

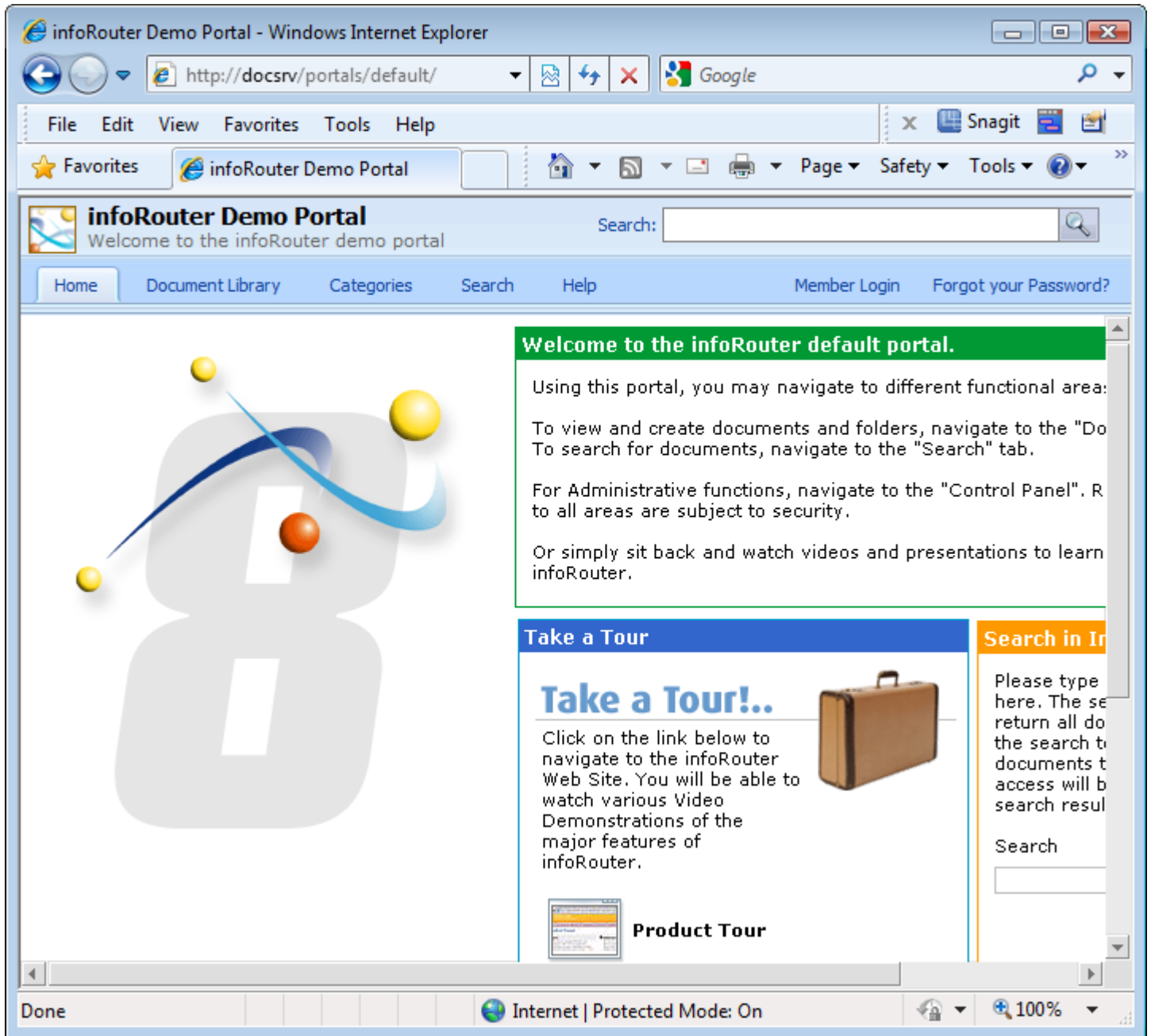
The Group Policy installation is explained in a separate document.

This document will walk you through installing the infoRouter Add-in for Microsoft Office Add-in.

Let's get started.

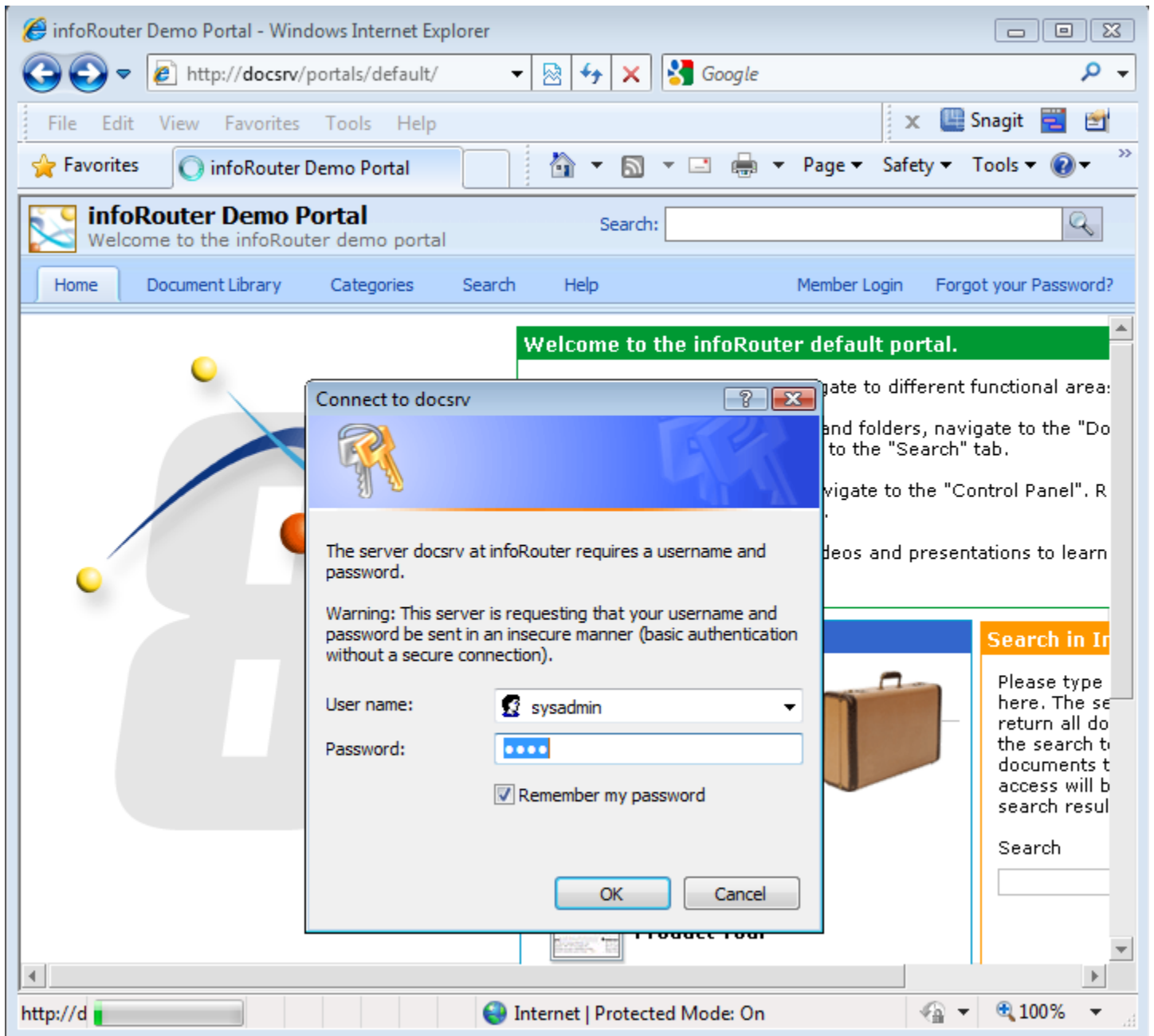
infoRouter MS Office Add-in Installation Guide

Launch infoRouter



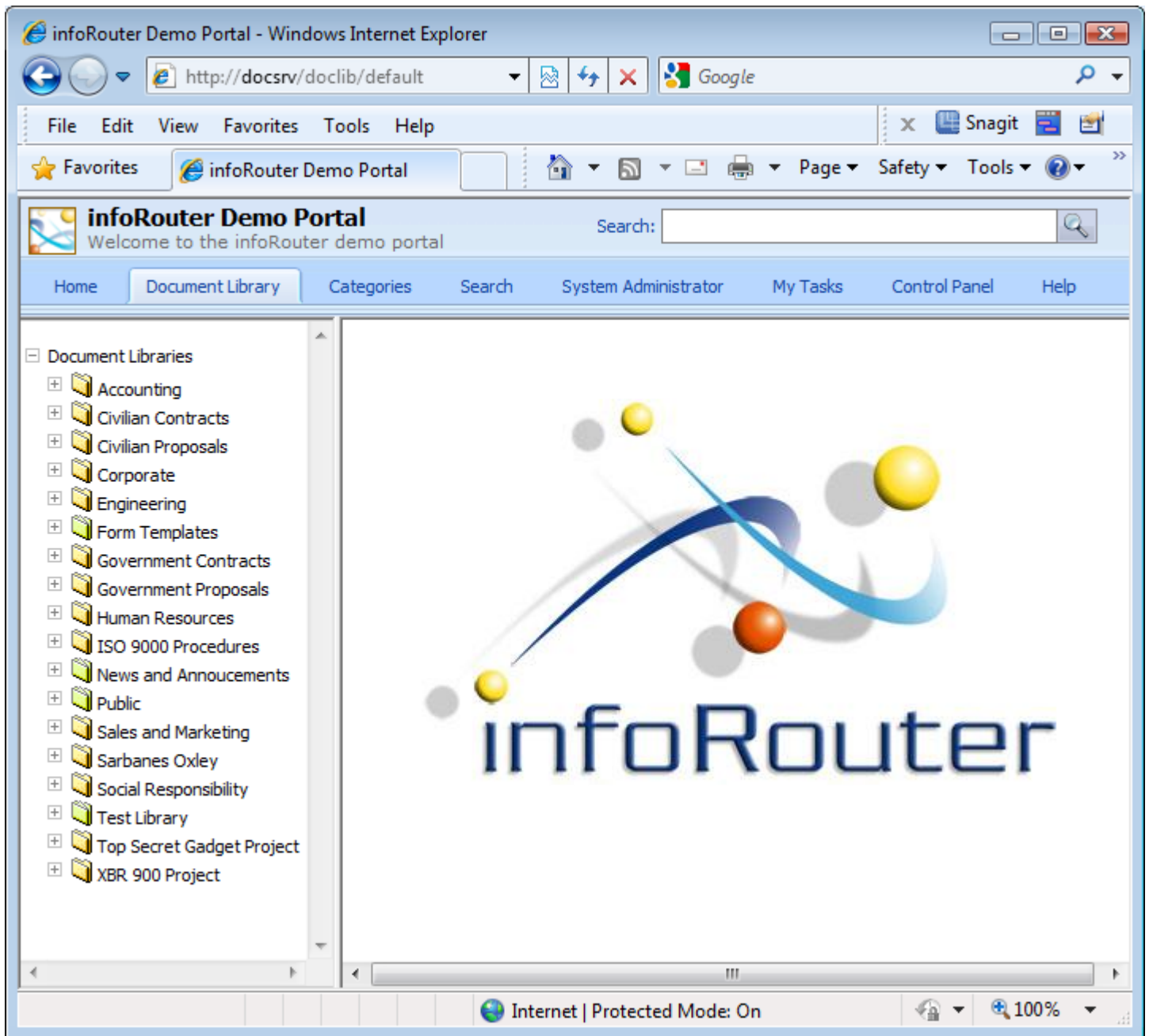
infoRouter MS Office Add-in Installation Guide

Click on the Member Login button and enter your credentials



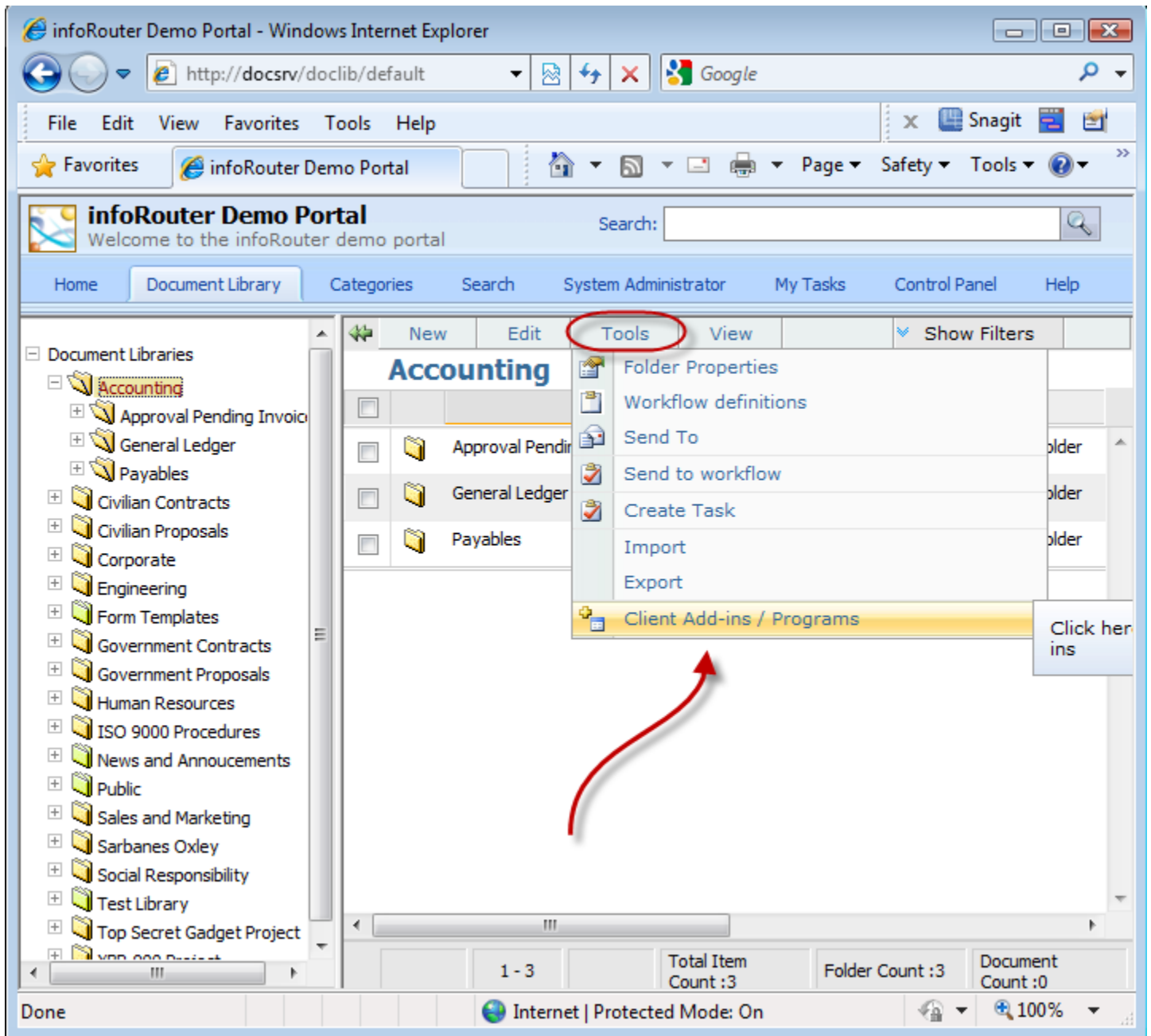
infoRouter MS Office Add-in Installation Guide

Switch to the Document Library. Click on a folder to display the Menu



infoRouter MS Office Add-in Installation Guide

Choose the "Client Add-ins / Programs" menu item



infoRouter MS Office Add-in Installation Guide

Click on the "OFFICE" link to download the setup program

The screenshot shows a web browser window displaying the 'infoRouter Demo Portal'. The page title is 'Client Add-ins / Programs'. It features a table with three columns: 'Client Program Name', 'Add-in Description', and 'Add-in Version'. The table lists three add-ins: 'OFFICE', 'OFFICEADDIN2010', and 'SCANSTATION'. The 'OFFICEADDIN2010' row is highlighted with a red box, and a red arrow points to the download links for its setup programs.

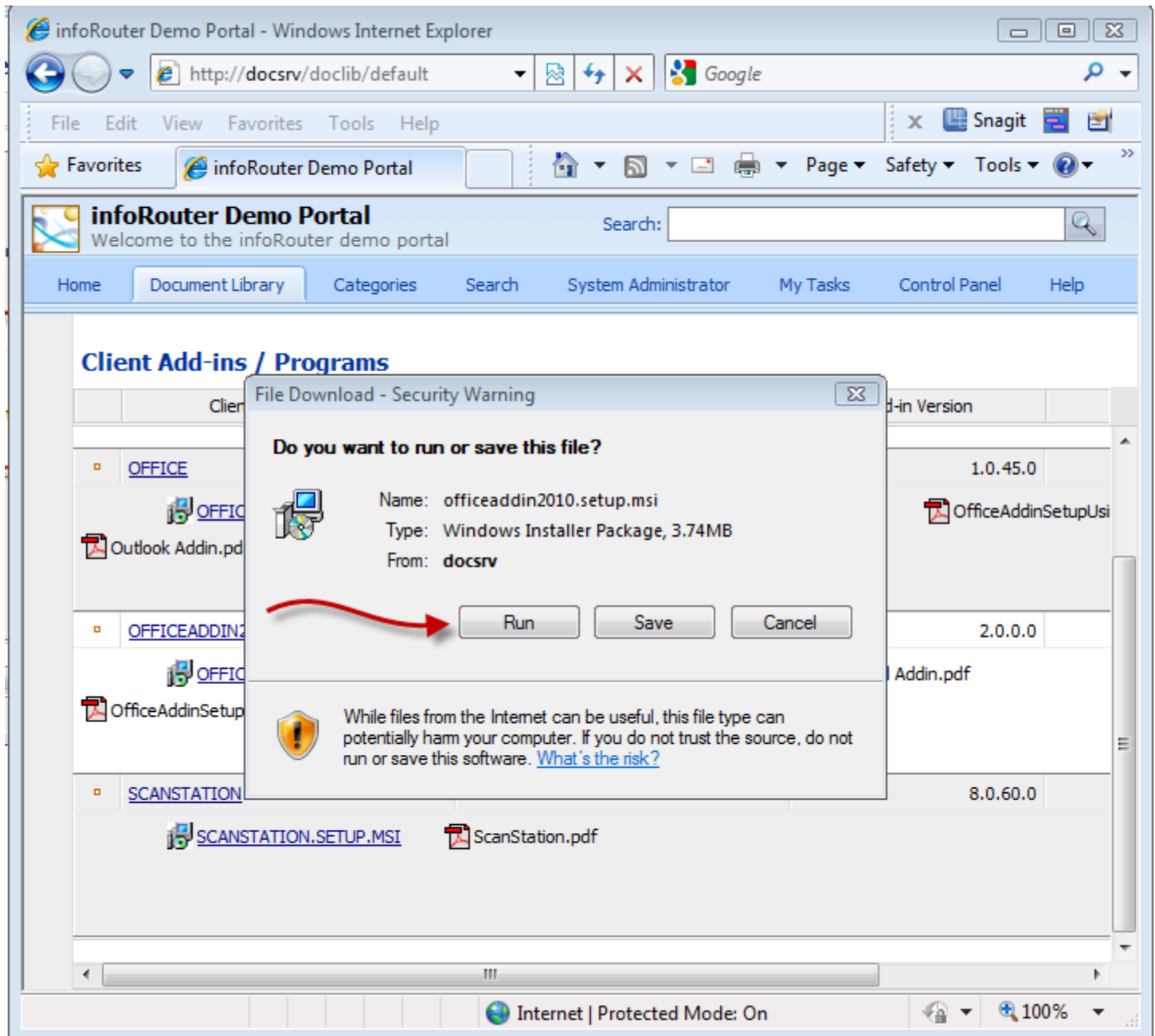
Client Program Name	Add-in Description	Add-in Version
OFFICE	Microsoft Office Addin	1.0.45.0
OFFICEADDIN2010	InfoRouter MS Office Add-in 2010	2.0.0.0
SCANSTATION	infoRouter Scan Station	8.0.60.0

Download links for OFFICEADDIN2010:

- [OFFICEADDIN2010.SETUP.MSI](#)
- [MicrosoftOfficeAddInSetup.pdf](#)
- [MS Word Addin.pdf](#)
- [OfficeAddinSetupUsingGroupPolicy.pdf](#)
- [Outlook Addin.pdf](#)

infoRouter MS Office Add-in Installation Guide

Click on "Save File" or "Save" button to save the setup program



Important Note:

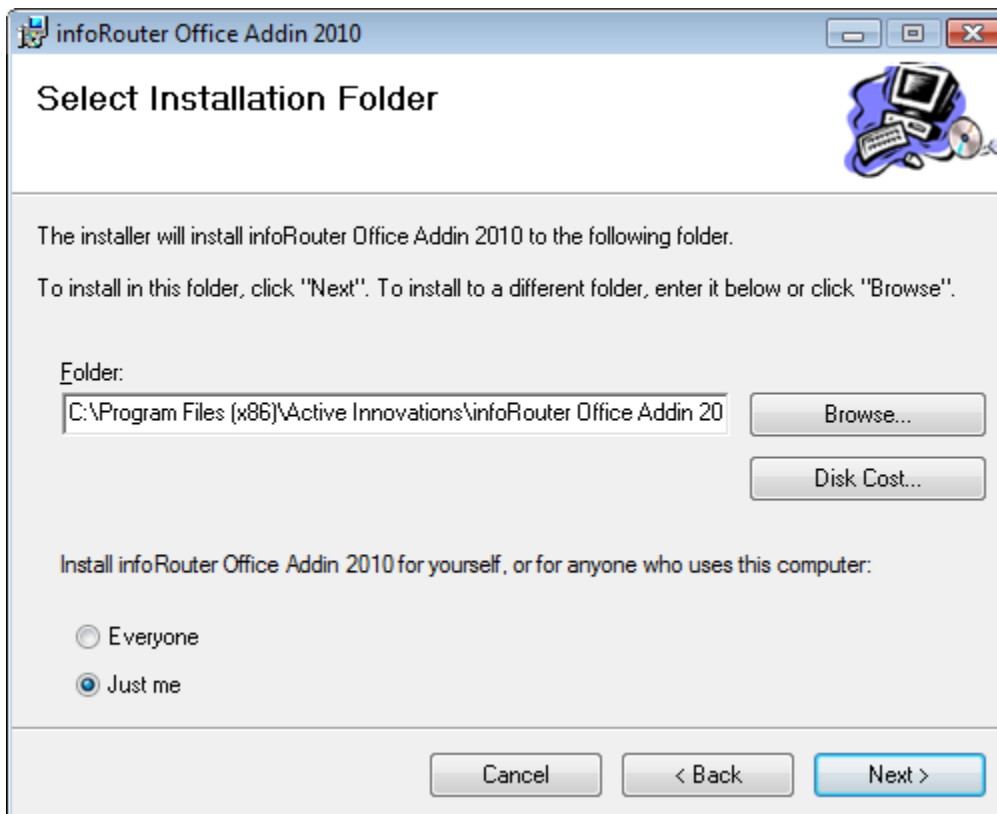
Please make sure that there are no Microsoft Office programs running on your desktop at this time. Once you exit all Microsoft Office programs, double click on the setup file to launch the setup program.

infoRouter MS Office Add-in Installation Guide

Double click on the setup program to launch the installer.

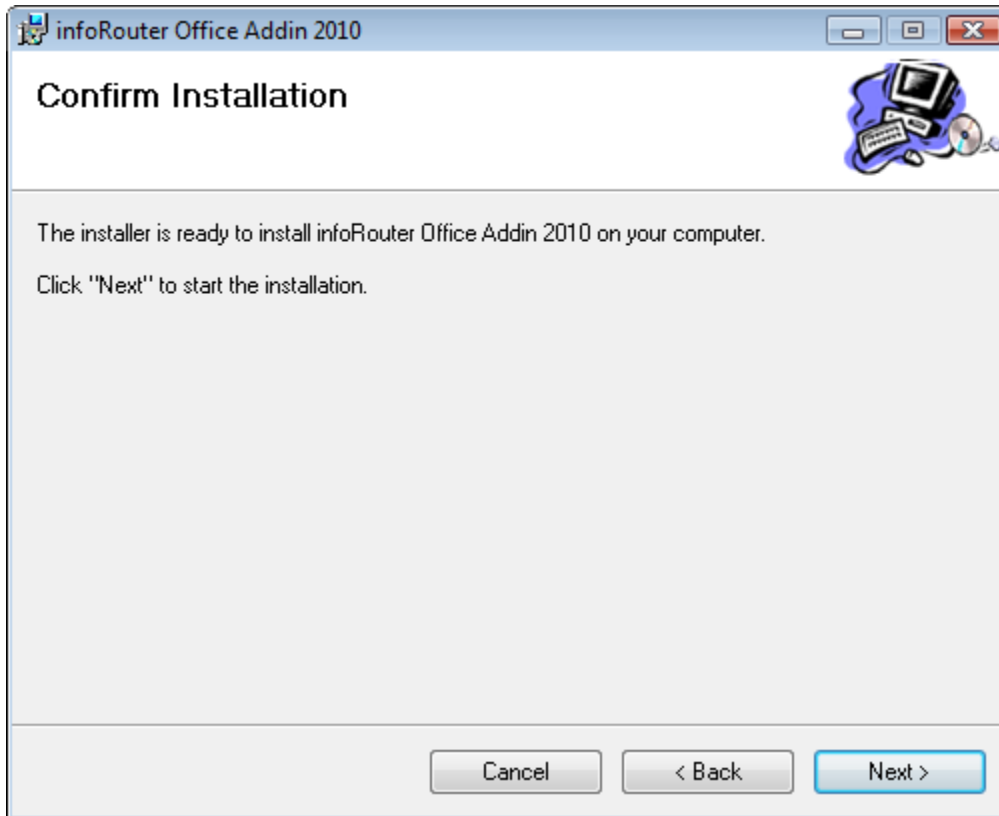


Click on the "Next" button to continue.

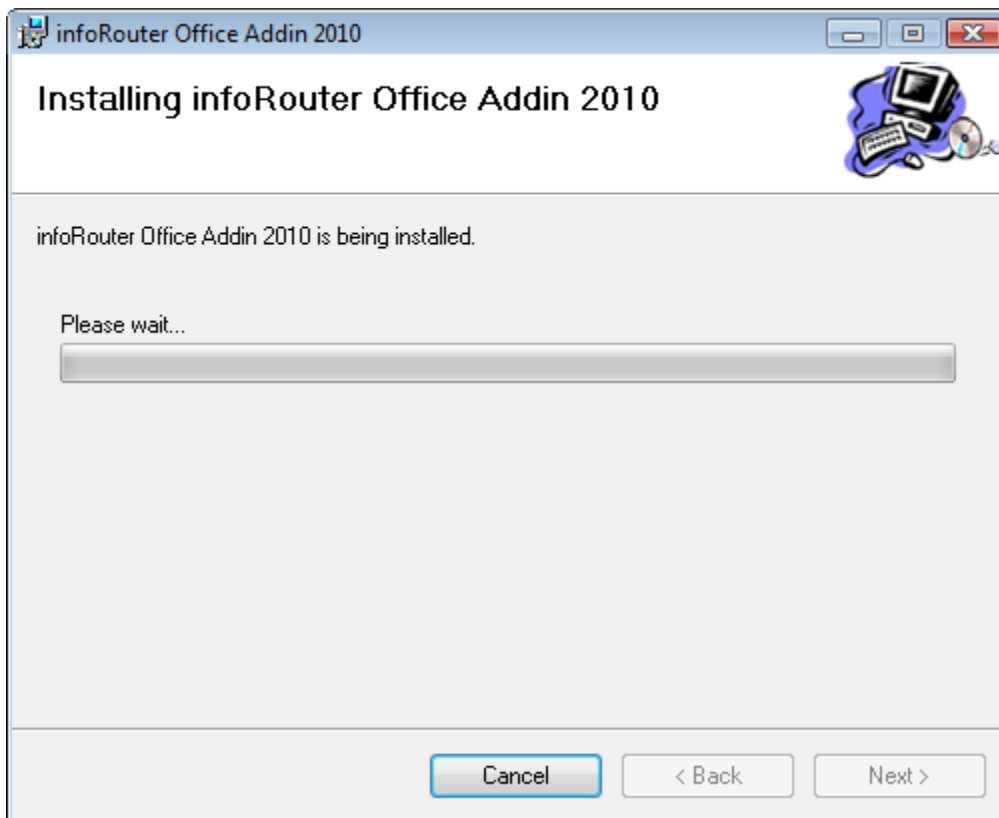


Choose a destination folder

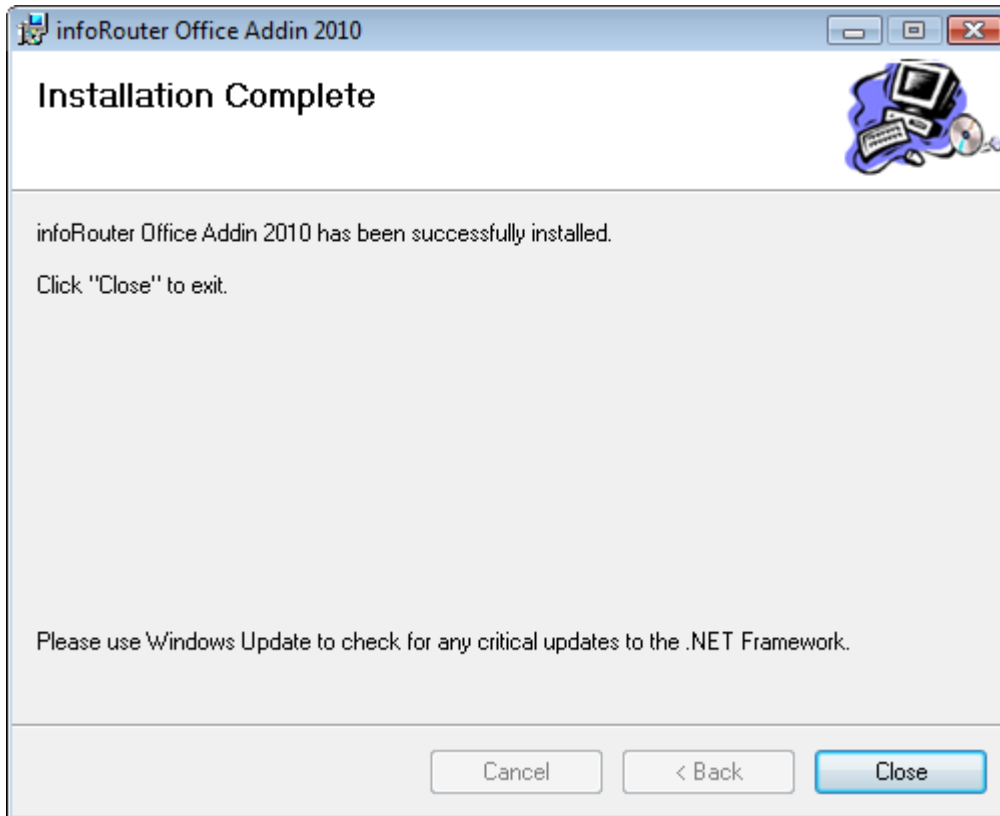
infoRouter MS Office Add-in Installation Guide



Confirm the installation by clicking on the "Next" button



infoRouter MS Office Add-in Installation Guide



The Microsoft Office Add-in is now installed on your desktop.

Launch MS Word or any other MS Office product.