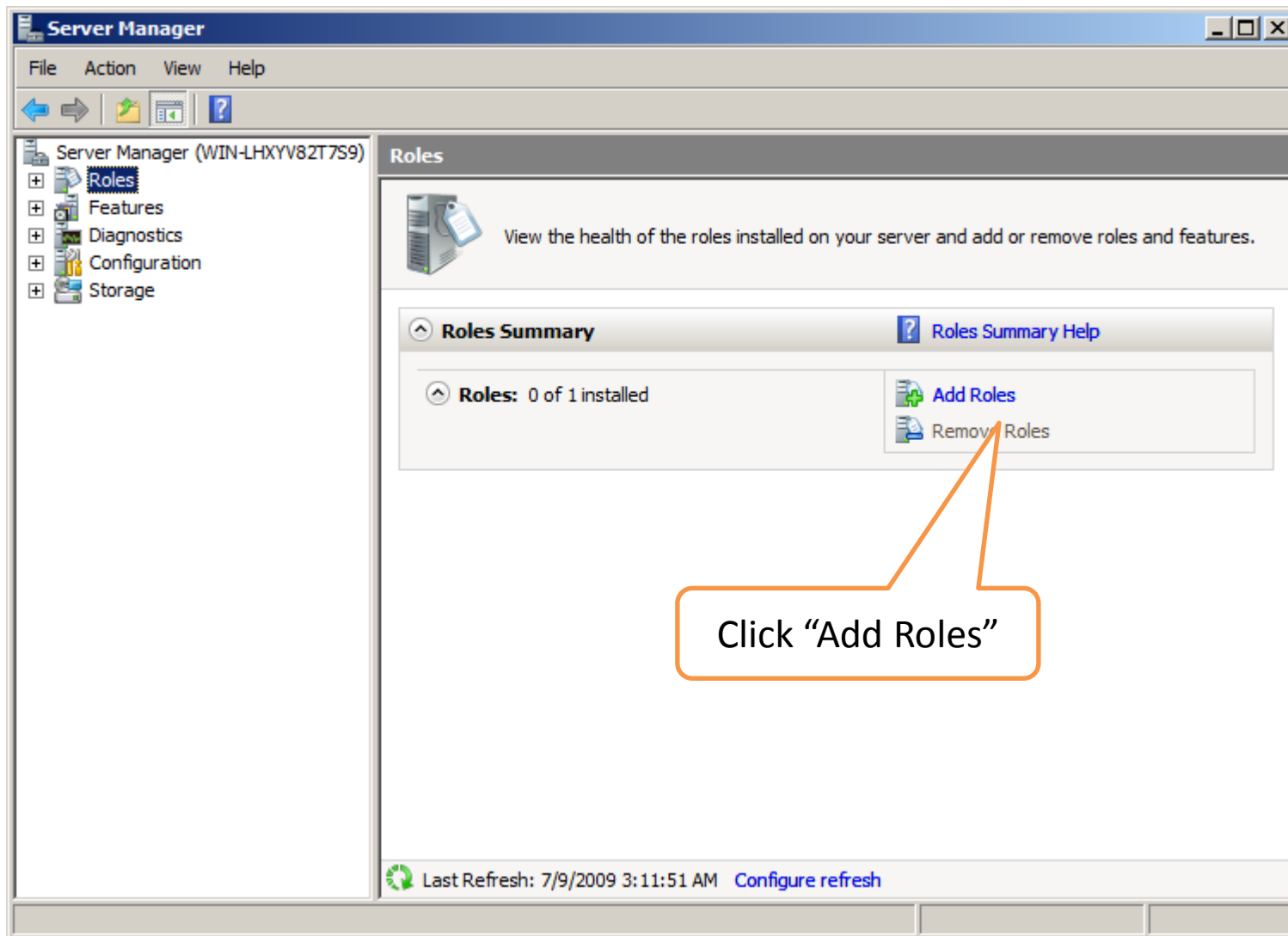


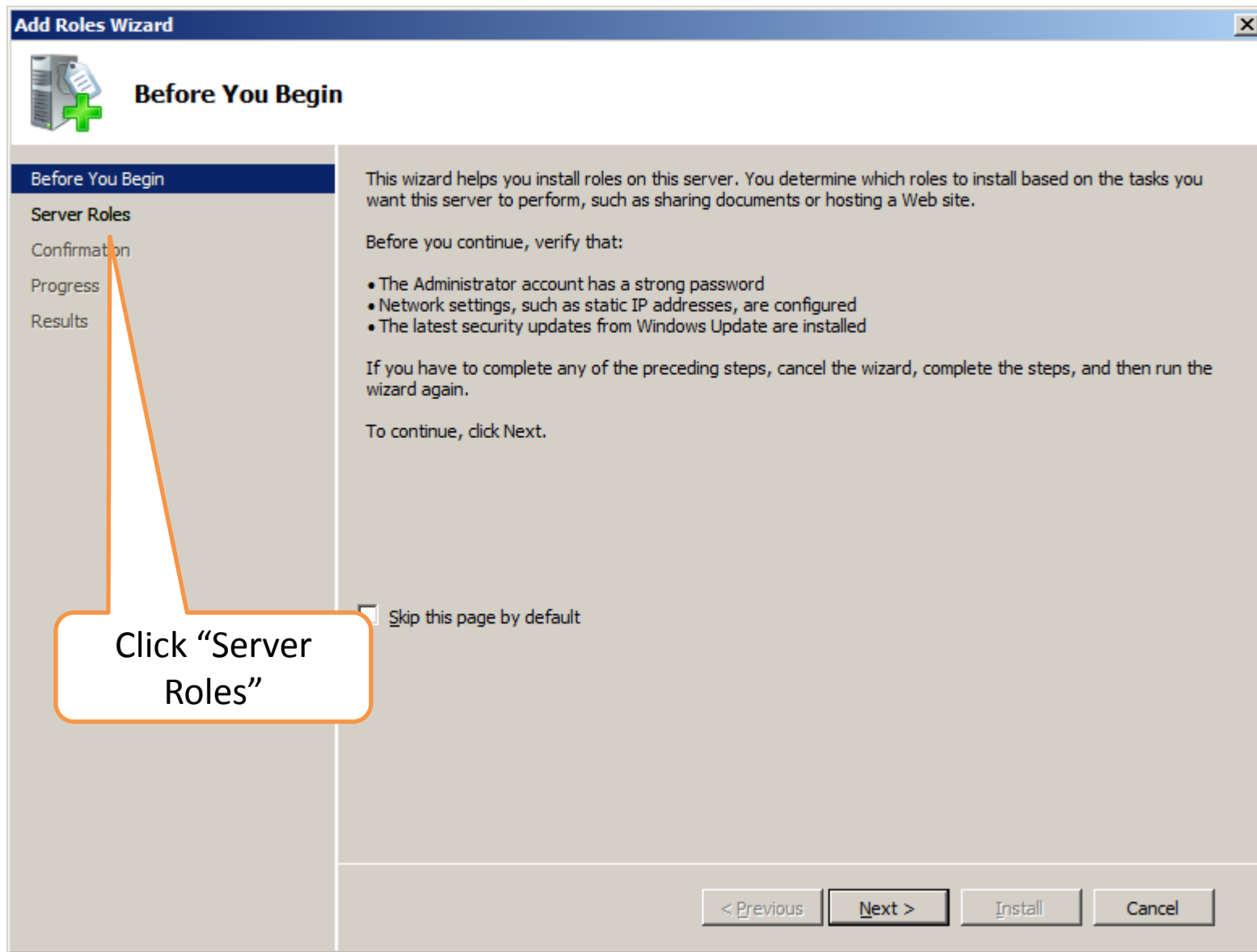


infoRouter Version 8.0 Prerequisites for Installation on MS Windows 2008 Standard Edition

Open the “Server Manager” window



“Add Roles Wizards” opens



Adding “Web Server” Roles

Add Roles Wizard

Select Server Roles

Before You Begin

Server Roles

Confirmation

Progress

Results

Select one or more roles to install on this server.

Roles:

- Active Directory Certificate Services
- Active Directory Domain Services
- Active Directory Federation Services
- Active Directory Lightweight Directory Services
- Active Directory Rights Management Services
- Application Server
- DHCP Server
- DNS Server
- Fax Server
- File Services
- Hyper-V
- Network Policy and Access Services
- Print Services
- Terminal Services
- UDDI Services
- Web Server (IIS)**
- Windows Deployment Services

Description:

[Web Server \(IIS\)](#) provides a reliable, manageable, and scalable Web application infrastructure.

[More about server roles](#)

< Previous Next > Install Cancel

Adding “Web Server” Roles

Add Roles Wizard

Select Server Roles

Before You Begin

Server Roles

Confirmation

Progress

Results

Select one or more roles to install on this server.

Roles:

- Active Directory Certificate Services
- Active Directory Domain Services

Description:

[Web Server \(IIS\)](#) provides a reliable, manageable, and scalable Web application infrastructure.

Add Roles Wizard

Add features required for Web Server (IIS)?

You cannot install Web Server (IIS) unless the required features are also installed.

Features:

- Windows Process Activation Service**
 - Process Model
 - Configuration APIs

Description:

[Windows Process Activation Service](#) generalizes the IIS process model, removing the dependency on HTTP. All the features...

Add Required Features **Cancel**

Why are these features required?

- windows Deployment services

[More about server roles](#)

< Previous **Next >** **Install** **Cancel**

When the “Web Server (IIS)” option is checked, this dialog might appear. Please click on the “Add Required Features” button.

Adding “Web Server” Roles

Add Roles Wizard

Select Role Services

Before You Begin
Server Roles
Web Server (IIS)
Role Services
Confirmation
Progress
Results

Select the role services to install for Web Server (IIS):

Role services:

- Web Server
 - Common HTTP Features
 - Static Content
 - Default Document
 - Directory Browsing
 - HTTP Errors
 - HTTP Redirection
 - Application Development
 - ASP.NET**
 - .NET Extensibility
 - ASP
 - CGI
 - ISAPI Extensions
 - ISAPI Filters
 - Server Side Includes
 - Health and Diagnostics
 - HTTP Logging
 - Logging Tools
 - Request Monitor
 - Tracing
 - Custom Logging
 - ODBC Logging

Description:
[ASP.NET](#) provides a server side object oriented programming environment for building Web sites and Web applications using managed code. ASP.NET is not simply a new version of ASP. Having been entirely re-architected to provide a highly productive programming experience based on the .NET Framework, ASP.NET provides a robust infrastructure for building web applications.

[More about role services](#)

< Previous **Next >** Install Cancel

Check “ASP.NET”.
Click on “Add Required Roles Services ” if prompted.

Adding “Web Server” Roles

Add Roles Wizard

Select Role Services

Before You Begin
Server Roles
Web Server (IIS)
Role Services
Confirmation
Progress
Results

Select the role services to install for Web Server (IIS):

Role services:

- ODBC Logging
- Security
 - Basic Authentication
 - Windows Authentication
 - Digest Authentication
 - Client Certificate Mapping Authentication
 - IIS Client Certificate Mapping Authentication
 - URL Authorization
 - Request Filtering
 - IP and Domain Restrictions
- Performance
 - Static Content Compression
 - Dynamic Content Compression
- Management Tools
 - IIS Management Console
 - IIS Management Scripts and Tools**
 - Management Service
- IIS 6 Management Compatibility
 - IIS 6 Metabase Compatibility
 - IIS 6 WMI Compatibility
 - IIS 6 Scripting Tools
 - IIS 6 Management Console

Description:
[IIS Management Scripts and Tools](#) provide infrastructure to programmatically manage an IIS 7 Web server by using commands in a command window or by running scripts. You can use these tools when you want to automate commands in batch files or when you do not want to incur the overhead of managing IIS by using the user interface.

[More about role services](#)

< Previous **Next >** Install Cancel

Check the “Basic Authentication” option

Check the “IIS Management Scripts and Tools” option

Click “Next”

NOTE: Please Check “IIS 6 Management Compatibility” to install LDAP, PDF conversion web services

Adding “Web Server” Roles

Add Roles Wizard

Confirm Installation Selections

Before You Begin
Server Roles
Web Server (IIS)
Role Services
Confirmation
Progress
Results

To install the following roles, role services, or features, click Install.

2 informational messages below

- This server might need to be restarted after the installation completes.

Web Server (IIS)

- Find out more about Windows System Resource Manager (WSRM) and how it can help optimize CPU usage

Web Server

- Common HTTP Features
 - Static Content
 - Default Document
 - Directory Browsing
 - HTTP Errors
- Application Development
 - ASP.NET
 - .NET Extensibility
 - ISAPI Extensions
 - ISAPI Filters
- Health and Diagnostics
 - HTTP Logging
 - Request Monitor
- Security
 - Basic Authentication

[Print, e-mail, or save this information](#)

< Previous Next > **Install** Cancel

Click on the “Install” Button

Adding “Web Server” Roles

Add Roles Wizard

Installation Progress

Before You Begin
Server Roles
Web Server (IIS)
 Role Services
Confirmation
Progress
Results

The following roles, role services, or features are being installed:

- Web Server (IIS)**
- Windows Process Activation Service**

Initializing installation...

< Previous Next > Install Cancel

Please wait while the required features are installed.

Adding “Web Server” Roles

Add Roles Wizard

Installation Results

Before You Begin
Server Roles
Web Server (IIS)
 Role Services
Confirmation
Progress
Results

The following roles, role services, or features were installed successfully:

⚠ 1 warning message below

⚠ Windows automatic updating is not enabled. To install the latest updates, use Windows Update in Control Panel to check for updates.

⬆ **Web Server (IIS)** **✔ Installation succeeded**

The following role services were installed:

Web Server

- Common HTTP Features
 - Static Content
 - Default Document
 - Directory Browsing
 - HTTP Errors
- Application Development
 - ASP.NET
 - .NET Extensibility
 - ISAPI Extensions
 - ISAPI Filters
- Health and Diagnostics
 - HTTP Logging
 - Request Monitor
- Security

[Print, e-mail, or save the installation report](#)

< Previous Next > **Close** Cancel

Click the “Close” button

Adding “File Services and Indexing Service” Roles

Server Manager (WIN-JCT8CSENM)

File Action View Help

Server Manager (WIN-JCT8CSENM)

- Roles
- Web Server (IIS)
- Features
- Diagnostics
- Configuration
- Storage

Roles

View the health of the roles installed on your server and add or remove roles and features.

Roles Summary

Roles: 1 of 17 installed

[Web Server \(IIS\)](#)

[Add Roles](#)

[Remove Roles](#)

Web Server (IIS)

Provides a reliable, manageable, and scalable Web application infrastructure.

Role Status

Messages: None

System Services: 4 Running, 1 Stopped

Events: None in the last 24 hours

Role Services: 25 installed

Role Service	Status
Web Server	Installed
Common HTTP Features	Installed
Static Content	Installed

[Add Role Services](#)

[Remove Role Services](#)

Click “Roles” Node

Click “Add Roles” Link

Adding “File Services and Indexing Service” Roles

Add Roles Wizard

Select Server Roles

Before You Begin

Server Roles

File Services

Role Services

Confirmation

Progress

Results

Select one or more roles to install on this server.

Roles:

- Active Directory Certificate Services
- Active Directory Domain Services
- Active Directory Federation Services
- Active Directory Lightweight Directory Services
- Active Directory Rights Management Services
- Application Server
- DHCP Server
- DNS Server
- Fax Server
- File Services**
- Hyper-V
- Network Policy and Access Services
- Print Services
- Terminal Services
- UDDI Services
- Web Server (IIS) (Installed)
- Windows Deployment Services

Description:

[File Services](#) provides technologies that help you manage storage, enable file replication, manage shared folders, ensure fast file searching, and enable access for UNIX client computers.

[More about server roles](#)

< Previous Next > Install Cancel

Check “File Services”
Option.

Adding “File Services and Indexing Service” Roles

Add Roles Wizard

Select Role Services

Before You Begin

Server Roles

File Services

Role Services

Confirmation

Progress

Results

Select the role services to install for File Services:

Role services:

- File Server
- Distributed File System
 - DFS Namespaces
 - DFS Replication
- File Server Resource Manager
- Services for Network File System
- Windows Search Service
- Windows Server 2003 File Services
 - File Replication Service
 - Indexing Service**

Description:

[Indexing Service](#) catalogs contents and properties of files on local and remote computers. It also enables you to quickly find files through a flexible query language.

[More about role services](#)

< Previous Next > Install Cancel

Adding “File Services and Indexing Service” Roles

Add Roles Wizard

Confirm Installation Selections

Before You Begin
Server Roles
File Services
 Role Services
Confirmation
Progress
Results

To install the following roles, role services, or features, click Install.

i 1 informational message below

i This server might need to be restarted after the installation completes.

File Services

- File Server**
- Content Indexing**


[Print, e-mail, or save this information](#)

< Previous Next > **Install** Cancel

Click “Install” button to continue.

Adding “File Services and Indexing Service” Roles


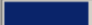
Add Roles Wizard

 **Installation Progress**

Before You Begin
Server Roles
File Services
 Role Services
Confirmation
Progress
Results

The following roles, role services, or features are being installed:

File Services

  Initializing installation...

< Previous Next > Install Cancel

Please wait while the required features are installed.

Adding “File Services and Indexing Service” Roles

The screenshot shows the 'Add Roles Wizard' window with the 'Installation Results' step selected in the left-hand navigation pane. The main area displays a success message: 'Installation succeeded' with a green checkmark icon. Below this, it lists the installed role services: 'File Server' and 'Windows Server 2003 File Services', with 'Indexing Service' listed as a sub-item. At the bottom of the window, there are four buttons: '< Previous', 'Next >', 'Close', and 'Cancel'. A blue link at the bottom left of the main area reads 'Print, e-mail, or save the installation report'.

Add Roles Wizard

Installation Results

Before You Begin
Server Roles
File Services
 Role Services
Confirmation
Progress
Results

The following roles, role services, or features were installed successfully:

File Services ✔ **Installation succeeded**

The following role services were installed:
File Server
Windows Server 2003 File Services
 Indexing Service

[Print, e-mail, or save the installation report](#)

< Previous Next > **Close** Cancel

Click “Close” button to continue.

To add another required feature, please go back to the “Server Manager”.

Click on the “Features” Node

Click on “Add Features”

if you don't have an SMTP server on your network, you need to install a “SMTP” Server to send emails using the local machine.

Adding “SMTP” Features.

Add Features Wizard

Select Features

Select one or more features to install on this server.

Features:

- Quality Windows Audio Video Experience
- Remote Assistance
- Remote Differential Compression
- Remote Server Administration Tools (Installed)
- Removable Storage Manager
- RPC over HTTP Proxy
- Simple TCP/IP Services
- SMTP Server**
- SNMP Services
- Storage Manager for SANs
- Subsystem for UNIX-based Applications
- Telnet Client
- Telnet Server
- TFTP Client
- Windows Internal Database
- Windows PowerShell
- Windows Process Activation Service (Installed)
- Windows Server Backup Features
- Windows System Resource Manager
- WINS Server
- Wireless LAN Service

Description:
[SMTP Server](#) supports the transfer of e-mail messages between e-mail systems.

[More about features](#)

< Previous Next > Install Cancel

Adding “SMTP” Features.

Add Features Wizard

Select Features

Select one or more features to install on this server.

Features:

- Quality Windows Audio Video Experience
- Remote Assistance

Description: [SMTP Server](#) supports the transfer of e-mail messages between e-mail systems.

Add Features Wizard

Add features required for SMTP Server?

You cannot install SMTP Server unless the required features are also installed.

Features:

- Remote Server Administration Tools
 - Feature Administration Tools
 - SMTP Server Tools

Description: [Remote Server Administration Tools](#) includes snap-ins and command-line tools for remotely managing roles and features.

[Add Required Features](#) [Cancel](#)

[Why are these features required?](#)

[More about features](#)

[< Previous](#) [Next >](#) [Install](#) [Cancel](#)

Click on the
“Add Required Role Service” button

Adding "SMTP" Features.

Add Features Wizard

Select Features

Features

Confirmation

Progress

Results

Select one or more features to install on this server.

Features:

- Quality Windows Audio Video Experience
- Remote Assistance
- Remote Differential Compression
- + Remote Server Administration Tools (Installed)
- Removable Storage Manager
- RPC over HTTP Proxy
- Simple TCP/IP Services
- SMTP Server**
- + SNMP Services
- Storage Manager for SANs
- Subsystem for UNIX-based Applications
- Telnet Client
- Telnet Server
- TFTP Client
- Windows Internal Database
- Windows PowerShell
- + Windows Process Activation Service (Installed)
- + Windows Server Backup Features
- Windows System Resource Manager
- WINS Server
- Wireless LAN Service

Description:

[SMTP Server](#) supports the transfer of e-mail messages between e-mail systems.

[More about features](#)

< Previous **Next >** Install Cancel

Adding “SMTP” Features.

Add Features Wizard

Confirm Installation Selections

Features

- Confirmation
- Progress
- Results

To install the following roles, role services, or features, click Install.

1 informational message below

- This server might need to be restarted after the installation completes.

- Remote Server Administration Tools**
 - Feature Administration Tools**
 - SMTP Server Tools
 - SMTP Server**

[Print, e-mail, or save this information](#)

< Previous Next > **Install** Cancel

Click “Install”

Adding "SMTP" Features.

Add Features Wizard



Installation Progress

Features

Confirmation

Progress

Results

The following roles, role services, or features are being installed:

Remote Server Administration Tools

SMTP Server



Initializing installation...

Please wait while the required features are installed.

< Previous

Next >

Install

Cancel

Adding “SMTP” Features.

The screenshot shows the 'Add Features Wizard' window with the 'Installation Results' tab selected. The window title is 'Add Features Wizard'. On the left, a sidebar contains the following navigation items: 'Features', 'Confirmation', 'Progress', and 'Results' (which is highlighted). The main area displays the following information:

The following roles, role services, or features were installed successfully:

- Remote Server Administration Tools** (Installation succeeded)
 - The following features were installed:
 - Feature Administration Tools**
 - SMTP Server Tools
 - SMTP Server** (Installation succeeded)

At the bottom of the window, there is a link: [Print, e-mail, or save the installation report](#). Below the link are four buttons: '< Previous', 'Next >', 'Close', and 'Cancel'. An orange callout box with the text 'Click the “Close” button.' has an arrow pointing to the 'Close' button.



Your server is now ready for the installation of infoRouter.
Please make sure that you meet the requirements outlined in
the System Requirements document.